

# Light Vehicle Autotronics Circuit Trainers

Our new range of autotronics trainers present **a practical approach to theoretical learning**. Your students can confidently develop diagnostic skills from the safety of the classroom. Faults can be introduced to the system of each trainer via a fault code, which highlights the area that should be investigated in order to solve the problem. The trainers are protected with a hinged cover and are stackable for easy storage.

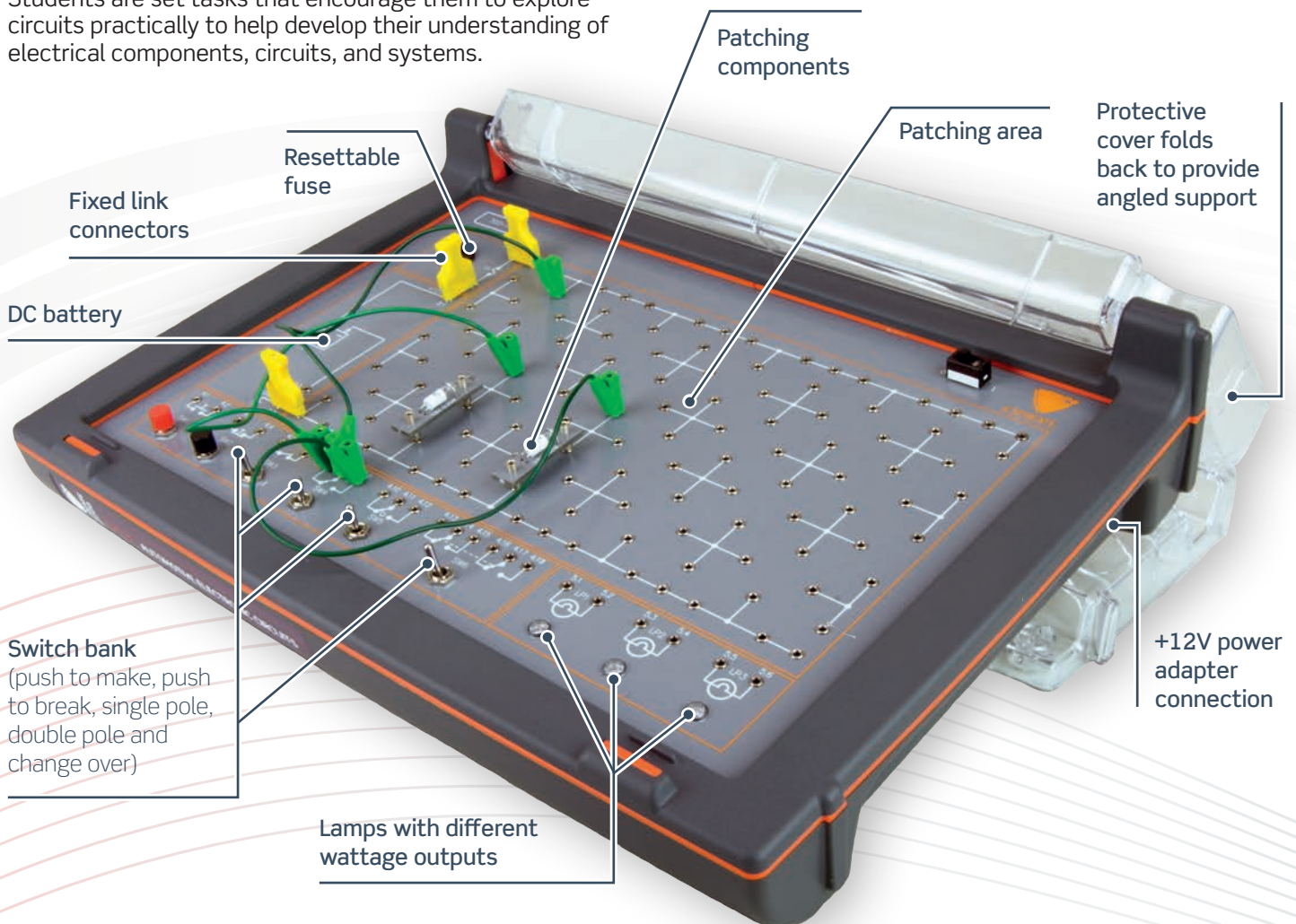
### Auto Electronics Trainer (700-10)

This hands-on learning resource allows students to build a variety of introductory automotive electronic circuits using a range of on-board and carrier-mounted components.

Students are set tasks that encourage them to explore circuits practically to help develop their understanding of electrical components, circuits, and systems.

Order as:

- 700-10 Auto Electronics Trainer



## Modern Auto Lighting Circuits Trainer (701-02)

Our autotronics trainers are designed to provide a practical approach to theoretical learning. Students are set tasks that encourage them to explore CAN controlled lighting circuits practically and improve their knowledge of electrical components, circuits, signals and systems.

Order as:

- 701-02 Modern Auto Lighting Circuits Trainer



## Modern Starting and Charging Systems Trainer (720-02)

This trainer is focused on the starting and charging systems of a modern vehicle. Students are set tasks that encourage them to explore CAN Data Bus systems practically.

Students will also be directed to work through a number of fault-finding activities, encouraging fault-diagnosis skills.

Order as:

- 720-02 Modern Starting and Charging Systems Trainer



## Modern Auxiliary Systems Trainer (721-01)

Students are set tasks that encourage them to explore CAN Bus electric window, door mirror, seat and central locking circuits practically and improve their knowledge of these systems.

Students will also be directed to work through a number of fault-finding activities, encouraging fault-diagnosis skills.

Order as:

- 721-01 Modern Auxiliary Systems Trainer





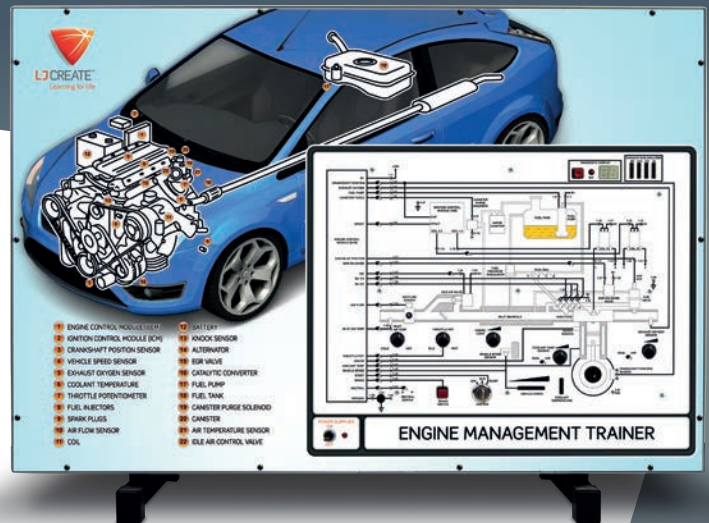
## Engine Management Systems Panel Trainer (751-01)

This trainer provides students and instructors with the opportunity to demonstrate, investigate, and fault-find a simulation of a typical engine management system.

It allows access to a variety of test points for engine components and the ECU system, and provides an understanding of the overall system layout and configuration.

Order as:

- 751-01 Engine Management Systems Panel Trainer



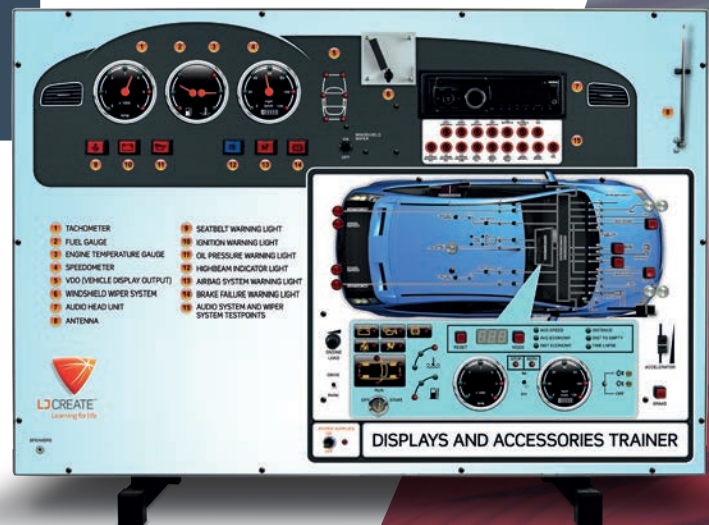
## Displays and Accessories Systems Panel Trainer (752-01)

This trainer provides students and instructors with the opportunity to demonstrate, investigate, and fault-find a simulation of typical automotive display systems.

The trainer is designed to allow access to a variety of test points for vehicle electrical components and explore how they relate to dashboard displays and warning lights.

Order as:

- 752-01 Displays and Accessories Systems Panel Trainer



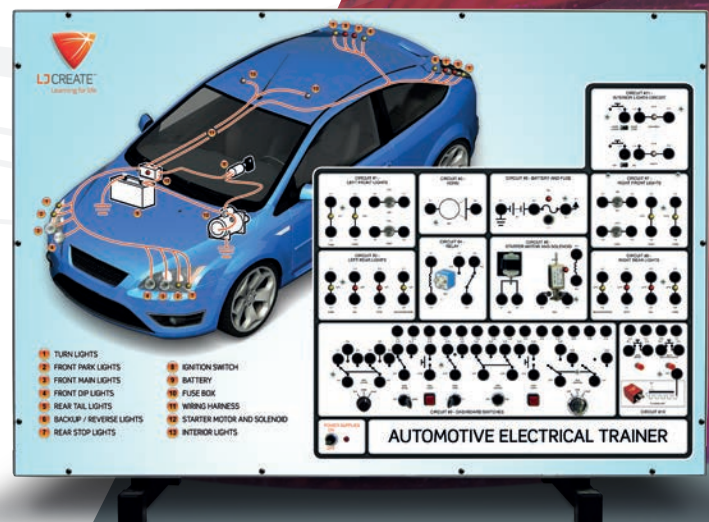
## Automotive Electrics Panel Trainer (753-01)

This trainer provides students and instructors with the opportunity to demonstrate, investigate, and fault-find a simulation of typical automotive electrical systems.

The trainer is designed to allow access to a variety of test points for vehicle electrical components, as well as provide an understanding of the overall system layout and configuration.

Order as:

- 753-01 Automotive Electrics Panel Trainer



# Light Vehicle Autotronics Panel Trainers

## Hybrid Vehicle Systems Panel Trainer (756-01)

This trainer provides students and instructors with the opportunity to demonstrate, investigate and fault-find a simulation of a hybrid vehicle electrical system.

The trainer is designed to allow access to a simulation of the mechanical operation as well as provide a mimic of the electrical power flow.

Order as:

- 756-01 Hybrid Vehicle Systems Panel Trainer

Power flow mimic allows students to investigate the balance between electrical and internal combustion power

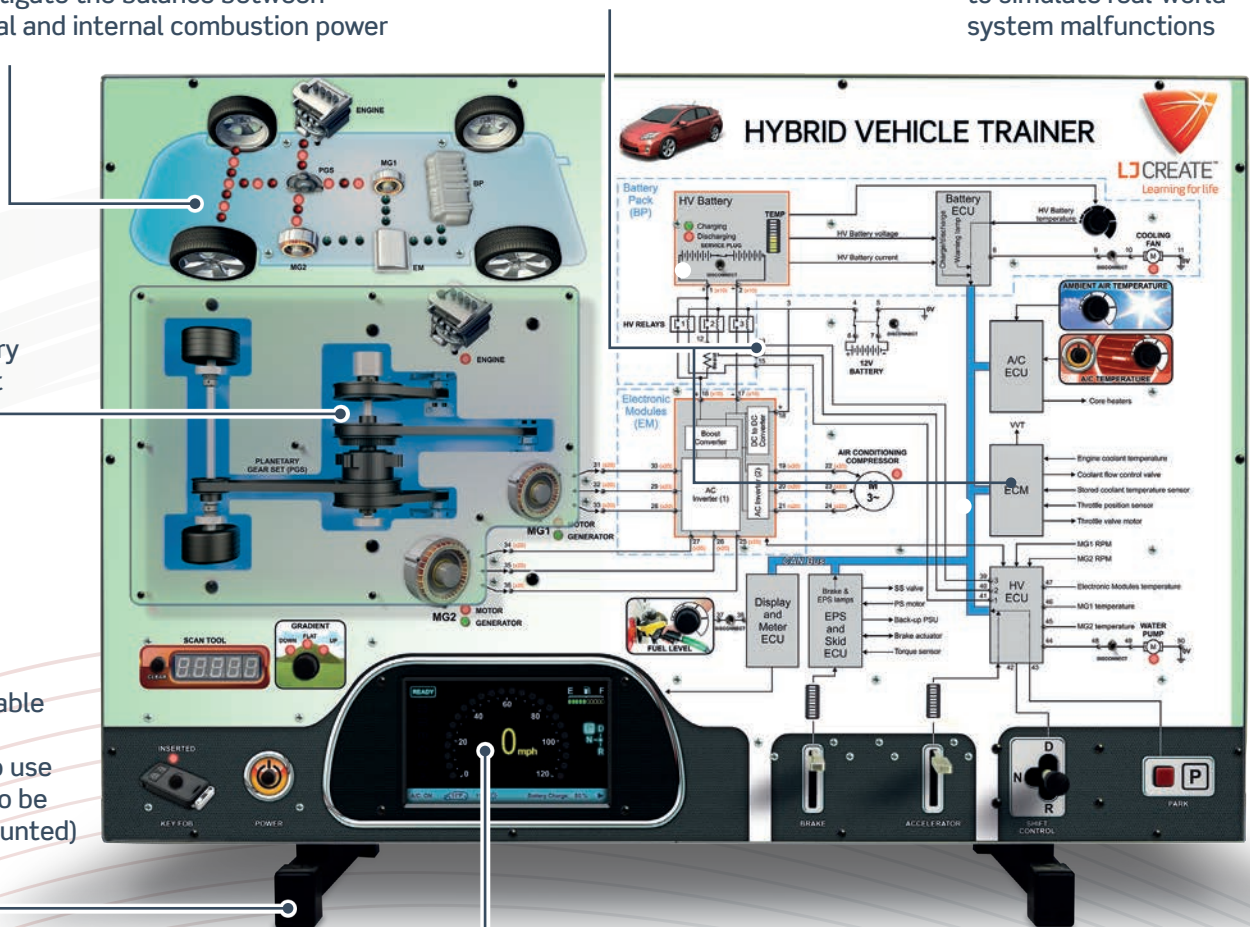
High and Low voltage system test points

Fault insertion options to simulate real-world system malfunctions

Planetary gear set

Retractable feet for desktop use (can also be wall-mounted)

Dashboard display





## Gasoline Engine (CAN Control) Trainer (760-01)

This trainer provides a complete working engine with an engine management system incorporating CAN bus control technology.

The engine incorporates the very latest twin independent variable camshaft timing (Ti-VCT) technology to optimize performance, reduce emissions and increase fuel efficiency.

### Order as:

- 760-01 Gasoline Engine (CAN Control) Trainer



## Air-Conditioning System Trainer (766-01)

This real component-based trainer provides students and instructors with the opportunity to demonstrate and investigate the operation of a functional automotive air conditioning system.

The trainer is designed to allow access to the vacuum system and electrical system, as well as provide the opportunity to understand the processes involved with system evacuation and charging.

### Order as:

- 766-01 Air-Conditioning System Trainer

