

Engine Performance Trainer

Model: MEG-007 Car Clip

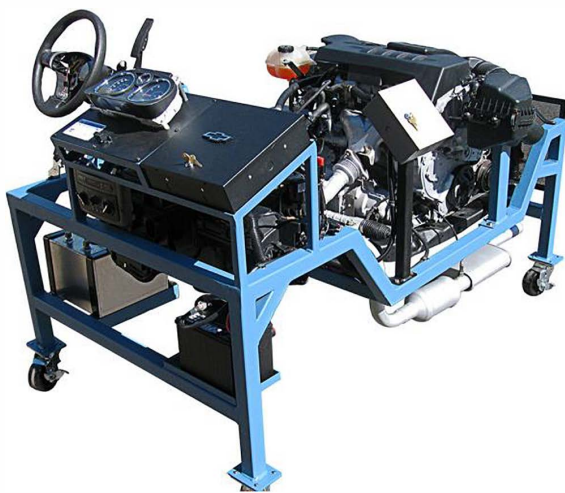
The MEG-007 Trainer can be made from any late model Domestic or Foreign automobile, which is converted into an Engine Performance Trainer with built-in Fault Simulation. Hybrid and Diesel models are available. It is complete with a running engine, transaxle, drivetrain, suspension, front brakes, dashboard electrical system and computer. Includes our NEW Dynamic Fault/Breakout Box, NATEF job sheets also available.



Gas Engine Performance Program

Model: MEG-520

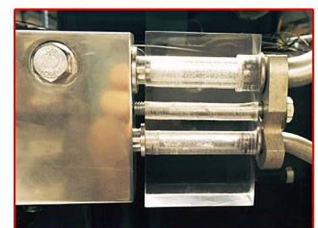
Megatech's 520 programs are designed to give practical troubleshooting experience with Domestic and Foreign car manufacturer's engines. With our unique fault device and breakout box, the instructor can demonstrate the loss of circuits while the engine is running. (Many options available w/ Electric Steering, HVAC, Sight Glass and Dyno.)



Fault Box



Optional HVAC



Optional Sight Glass

ENGINE PERFORMANCE



Oil-Less 4 Cycle Multi-fuel Engine

Model: MEG-150

The MEG-150 Engine Performance program has made the study of 4-cycle engines a simple task and opened the door for the student to conduct multiple experiments in alternate fuels. This patented and unique engine features transparent engine construction, which exposes all the moving parts of a 4-cycle engine. Since the MARK III is oil-less too, it enables the students to observe clearly the crankcase components and internal combustion of the engine. Includes variable timing and compression. (Available with dynamometer or stand alone engine)

Alt. Fuel Engine Program w/ Data Acquisition

Model: MEG-150DAD

- Graph multiple runs using Alt. Fuels
- Horsepower of Alt. Fuels
- Store graphs & compare data
- Works with Lab View
- Cylinder Pressure Mapping available



Starting/Charging

Model: MEG690BT

- Actual components
- Real World electrical values
- Actual current draw on the starter
- Pinouts

EVAP Trainer

Model: MEG-EVAP

- Includes fuel tank and cap, purge solenoid, fuel tank pressure sensor, and a vent solenoid.
- Variable leaks simulate the "vehicle" being tested.



OBDII Fuel Injection Trainer

Model: MEG-550G (Available in GM, Ford, and Toyota)



Engine Management System Training

Model: MEG-570

- Modular bench-top design, Student built
- Actual components connected to a PCM
- OBDII based with DLC
- Separate Ignition Board

